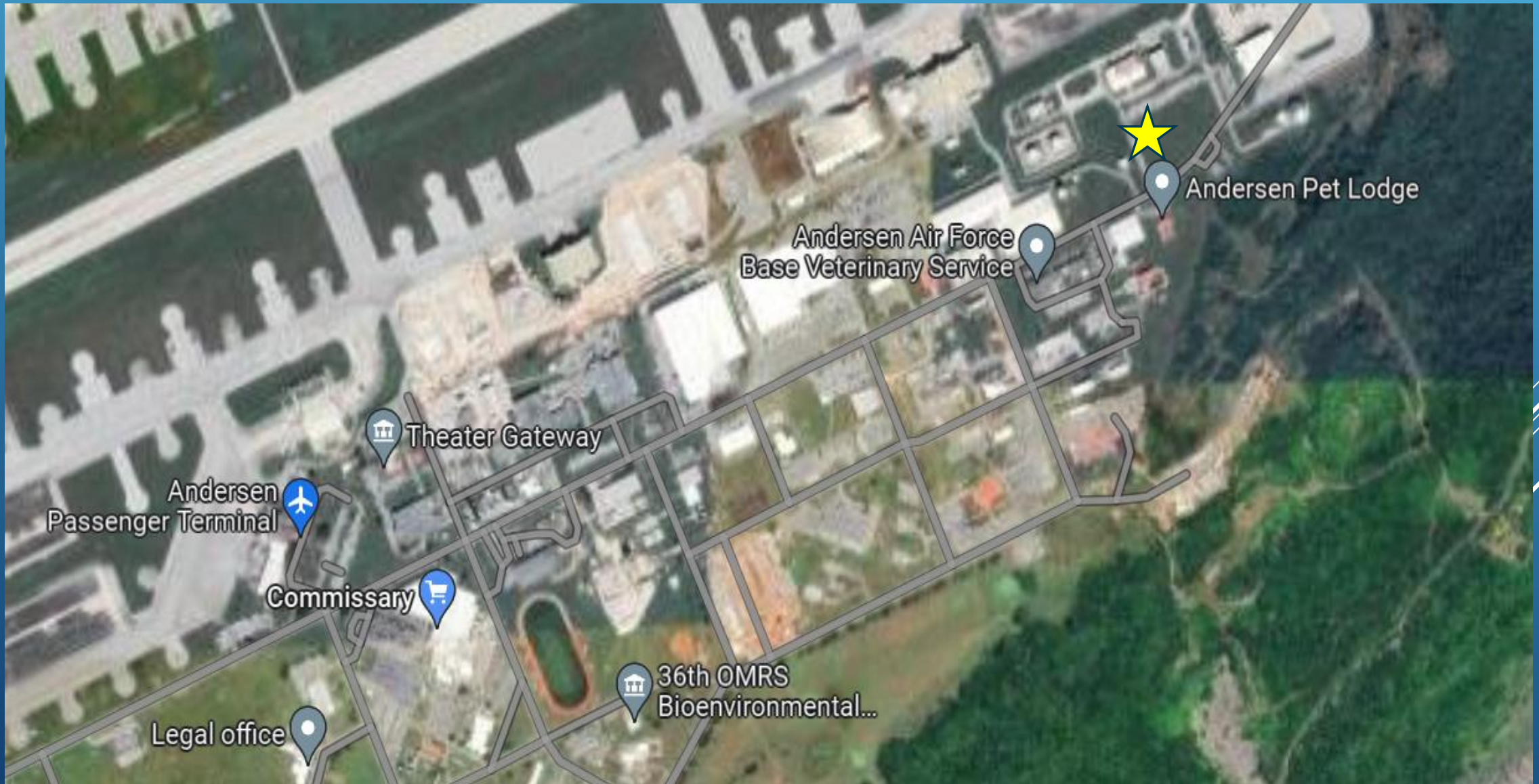


NEW TERMINAL IS LOCATED AT THE END OF ARC LIGHT BLVD ON THE LEFT





DEPARTURES FROM: ANDERSEN AFB (UAM)

THURSDAY, 4 JULY 2025



<u>ROLL CALL</u>	<u>DESTINATION(S)</u>	<u>SEATS</u>	<u>REMARKS</u>
1357	HONOLULU, HAWAII	52F	TBD
1405	HONOLULU, HAWAII	53T	TBD
1814	TRAVIS AFB , FAIRFIELD, CA	73F	TBD

Seat Release: T= Tentative, F= Firm, TBD= To Be Determined

TRAVEL RESTRICTIONS APPLY CONTACT AMC PASSENGER TERMINAL FOR INFORMATION

All flights are subject to change without notice

Please arrive NLT= NO LATER THAN ONE HOUR PRIOR to roll call to mark yourself present



DEPARTURES FROM: ANDERSEN AFB (UAM)

FRIDAY, 5 JULY 2025



<u>ROLL CALL</u>	<u>DESTINATION(S)</u>	<u>SEATS</u>	<u>REMARKS</u>
0815	KADENA AB, JAPAN	10T	PASSPORT REQUIRED
1440	ELMENDORF, ANCHORAGE	10T	TBD
1510	ELMENDORF, ANCHORAGE	10T	TBD

Seat Release: T= Tentative, F= Firm, TBD= To Be Determined

TRAVEL RESTRICTIONS APPLY CONTACT AMC PASSENGER TERMINAL FOR INFORMATION

All flights are subject to change without notice

Please arrive NLT= NO LATER THAN ONE HOUR PRIOR to roll call to mark yourself present



DEPARTURES FROM: ANDERSEN AFB (UAM) SATURDAY, 6 JULY 2025



<u>ROLL CALL</u>	<u>DESTINATION(S)</u>	<u>SEATS</u>	<u>REMARKS</u>
0522	HONOLULU, HAWAII	3F	TBD

Seat Release: T= Tentative, F= Firm, TBD= To Be Determined

TRAVEL RESTRICTIONS APPLY CONTACT AMC PASSENGER TERMINAL FOR INFORMATION

All flights are subject to change without notice

Please arrive NLT= NO LATER THAN ONE HOUR PRIOR to roll call to mark yourself present




NOTICE



Information Disseminated to the Public and Authorized Individuals

Information and files provided to authorized individuals by internet, mail, email, and fax containing mission-related information, such as operational or flight schedules, are intended solely for the use of determining space-r and space-a flight availability. Any attempts to retransmit, upload, pass to unauthorized persons, or change the information received for any other purpose is strictly prohibited. Any action circumventing the parameters specified and/or implied above is subject to investigation and/or prosecution by law enforcement.

Several white diagonal lines of varying lengths and thicknesses are positioned on the right side of the slide, extending from the middle to the bottom right corner.